

CLIMATE-PROOF CITIES, CITIES FOR PEOPLE

CITIES ALLIANCE MENA STRATEGY

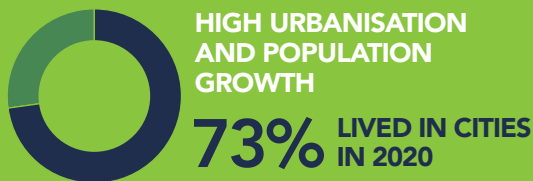
Cities Alliance envisions climate-proof cities in the Middle East and North Africa (MENA) region that benefit all residents, and we have developed a strategy for achieving that vision.



THE MENA REGION AND CLIMATE CHANGE

MENA countries are especially susceptible to climate change impacts, such as desertification, land degradation, food insecurity, resource competition, and climate-induced displacement.

The region is experiencing



The MENA region is the **MOST WATER-SCARCE PLACE ON EARTH, HOLDING JUST**

1% OF THE PLANET'S FRESHWATER.



ONGOING CONFLICTS AND HUMANITARIAN CRISES INTENSIFY URBAN GROWTH AS REFUGEES MOVE TO CITIES.



The region originates

58% OF THE WORLD'S REFUGEES.



CITIES ALLIANCE FOCUSES ON URBAN PLANNING TO ADDRESS THE NEXUS OF MIGRATION, GENDER INEQUALITY AND CLIMATE CHANGE IMPACTS IN URBAN SETTINGS.

Migrants, women and the youth are experiencing the greatest impacts of climate change, which can deepen pre-existing divides and expose those groups to new vulnerabilities.

For cities to survive and flourish, they must integrate diverse perspectives and include all residents, especially vulnerable groups, in the planning, implementation, and monitoring of climate adaptation initiatives.





PARTNERSHIP

By building and strengthening regional partnerships, Cities Alliance aims to mobilise inclusive climate action and support cities and communities in the MENA region as they adapt and mitigate the impacts of climate change.

CAPACITY-BUILDING

Our work in the region is based on building local capacity, empowering cities and communities to take ownership of their adaptation journey, and improving the well-being, health, and livelihoods of people living in MENA cities.



EVIDENCE

Together with partners, we are producing new evidence on climate-related urban migration and secondary cities through research and pilot programming to build climate-proof cities.

PARTICIPATION

Cities Alliance has pioneered participatory frameworks and tools (such as Her4Climate and Her4Water) that are bringing women into the development process and highlighting their needs.

A PROVEN RECORD ON INCLUSIVE CLIMATE ACTION

Cities Alliance has supported hundreds of cities over more than 20 years, linking environmental and socio-economic development through integrated, inclusive planning. We have developed tools and overall city strategic visions, down to local master plans and neighbourhood upgrading projects.

OUR EXPERTISE INCLUDES:

Developing participatory and inclusive gender-sensitive urban planning, city development strategies, and communal investment programmes; and



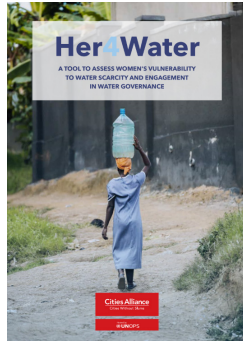
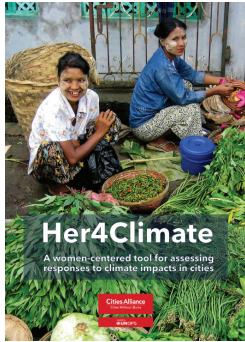
Supporting municipalities to develop and implement infrastructure projects while strengthening their project management and capacity to leverage additional funding.



In the MENA region, Cities Alliance initiatives have addressed urban issues, including integrated slum upgrading, urban planning, migration, housing, inclusive heritage, gender equality, and environmental sustainability.

PORTFOLIO HIGHLIGHTS

1 The Her4 Climate and Her4Water participatory tools support identifying women's vulnerabilities to climate change in urban areas and recognise women's response and ability to cope with climate change issues.



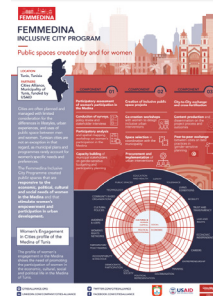
2 The Women and Sustainable Cities programme in Mauritania, Morocco, and Tunisia is strengthening women's leadership in the decision-making and management of scarce urban water resources.



3 Climate-resilient urban expansion planning in the Horn of Africa is helping municipalities create a framework for adaptation and mitigation investments and guide growth away from high-risk areas by offering alternative sites.



4 The Femmedina Inclusive City Programme has created safer public spaces that respond to the needs of women in the Medina of Tunis.

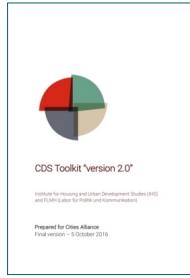


5 The Madinatouna Programme strengthened local participatory democracy and supported inclusive and sustainable territorial development in 8 municipalities in Tunisia through urban policy development, infrastructure and service projects.



PORTFOLIO HIGHLIGHTS

6 The integrated city development strategy (CDS) planning approach, designed by Cities Alliance to promote equitable growth in cities, has been used in more than 140 municipalities, including cities in Egypt, Jordan, Morocco, Syria, Tunisia, and Yemen.



7 Cities Alliance supported the economic integration of migrants in two Tunisian cities and migration profiling and assessments for three cities in Lebanon.



8 Integrated slum upgrading benefited cities in Egypt (Ismailia Governorate), Morocco (Tetouan), and Palestine (East Jerusalem).



CITIES ALLIANCE GLOBAL IMPACT

Cities Alliance has provided support to hundreds of developing cities over more than 20 years in 88 countries, linking environmental and socioeconomic development through integrated, inclusive planning.



500,000

PEOPLE DIRECT ANNUAL REACH



\$1.7B

INVESTMENT LEVERAGED